

SATURDAY - 27.07.2024

Guided E-Bike Tour to the Pragser Wildsee

Easy e-bike tour to Pragser Wildsee lake (from 10 years). Riding time: 1.5 h (there). Difference in altitude: 400 m.

🕒 09:00 - 13:30 | 📍 Tourist Info Olang & Tourist Info Niederrassen, |
 📄 within 5 pm. of the previous day online or in the tourist offices | Fee: with Guest Pass Olang & Antholz € 10.-, otherwise € 20.- per person | € Chargeable | 📞 +39 0474 496277


Breakfast at the Hofstatt hut

On Saturdays from 9 to 11 o'clock Patrizia prepares you for an adventurous day.

🕒 09:00 - 11:00 | 📍 Hofstatt cabin, Antholz Mittertal | 📄 Reservation required: T. +39 340 0596718


Heufler Art Experience

Basic ceramics course: Colombino technique, Imprints on leaf

🕒 15:00 - 19:00 | 📍 Ansitz Heufler, Oberrasen | 📄 Basic ceramics course | Reservation: +39 0474 790200 | 📞 +39 0474 790200


Summer festival of the music band Oberrasen

🕒 18:00 - 00:00 | 📍 Pavilion, Oberrasen

SUNDAY - 28.07.2024

Heufler Art Experience

Basic ceramics course: Colombino technique, Imprints on leaf

🕒 09:00 - 13:00 | 📍 Ansitz Heufler, Oberrasen | 📄 Basic ceramics course | Reservation: +39 0474 790200 | 📞 +39 0474 790200


Summer festival of the music band Oberrasen

🕒 11:00 - 00:00 | 📍 Pavilion, Oberrasen

MONDAY - 29.07.2024

Guided E-Bike Tour to the Pragser Wildsee

Easy e-bike tour to Pragser Wildsee lake (from 10 years). Riding time: 1.5 h (there). Difference in altitude: 400 m.

🕒 09:30 - 14:30 | 📍 Tourist Info Olang & Tourist Info Niederrassen, |
 📄 within 5 pm. of the previous day online or in the tourist offices | Fee: with Guest Pass Olang & Antholz € 10.-, otherwise € 20.- per person | € Chargeable | 📞 +39 0474 496277


Family hike to the huts of Olang

🕒 10:00 - 15:00 | 📍 Piazza Floriani 19, Valdaora di Mezzo / Mitterolang |

📄 within Monday 9a.m. online or in the tourist offices | Fee: with Guest Pass Olang & Antholz € 5.-, otherwise € 15.- per person | € Chargeable | 📞 +39 0474 496 277


Adventure Camp for kids (from 6 - 12 years)

🕒 10:00 - 13:00 | 📍 Kids Area Panorama, Oberolang | 📄 within 5 pm. of the previous day online or in the tourist offices | Exclusive with Guest Pass Olang & Antholzer Valley |
 € Chargeable | 📞 +39 0474 496277


Kron Arc Adventure - archery for the family

Introductions at 1.00 p.m., 2.00 p.m. and 3.00 p.m. Plan approx. 3 hours for the archery.

🕒 13:00 - 14:00 | 📍 Rodelbahnweg 3, Info Stand Panorama - Valdaora di Sopra/Oberolang |
 📄 within 12 a.m. of the event day in the tourist offices | Exclusive with Guest Pass Olang & Antholz Valley | Fee: adults € 15,00; children € 10,00 | € Chargeable | 📞 +39 0474 496 277


Segway: Introduction & adventure tour

🕒 15:30 - 16:30 | 📍 Mitterolang | 📄 within 11 a.m. online or in the tourist offices | Fee: with Guest Pass Antholzer & Olang € 20.-, otherwise € 25.- per person | € Chargeable |
 📞 +39 0474 497190


Speck & Wine

Discover South Tyrolean speck and be surprised by a unique combination with South Tyrolean wine.

🕒 16:00 - 17:00 | 📍 Steiner Butchery, Niederrasen |
 📄 within 10 a.m. at the Tourist Info Antholzer phone +39 0474 496269 or Steiner Butchery phone +39 0474 496849 | Costs: € 15,00 with Guest Pass, otherwise € 20,00 |
 € Chargeable | 📞 +39 0474 496849


Kneipp cure and barefoot walk

Is barefoot walking healthy? What is the effect of dew treading? Why stork walk when Kneipp? The fresh spring water refreshes the body and does many other things.

🕒 16:30 - 18:00 | 📍 Meeting point: 4.30 pm. at the Niederrassen Tourist Info, Niederrassen |
 📄 within 10 a.m. online or in the tourist offices | Fee: with Guest Pass Antholzer & Olang € 5.-, otherwise € 15,00 | € Chargeable | 📞 +39 0474 496269

TUESDAY - 30.07.2024

Ashtanga yoga for balance and relaxation

Yoga at the fish pond in Antholz Niedertal offers a unique opportunity to relax and regenerate amidst the tranquil and picturesque nature.

🕒 09:00 - 10:00 | 📍 Meeting point: at 9.00 a.m. at the fish ponds foot bridge in Antholz Niedertal, Antholz Niedertal |
 📄 within 5 pm. of the previous day online or in the tourist offices | Fee: with Guest Pass Antholzer & Olang € 5.-, otherwise € 15.- per person | € Chargeable | 📞 +39 0474 496269



Challenging hike

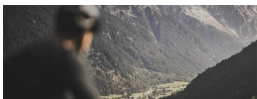
🕒 09:00 - 15:00 | 📍 Florianiplatz 19, Valdaora di Mezzo / Mitterolang |
📌 within 5 pm. of the previous day online or in the tourist offices | Fee: with Guest Pass Olang & Antholz € 5.-, otherwise € 15.- per person | € Chargeable | 📞 +39 0474 496277



Bees: a queen and her people | stroll to the beehive

Equipped with protective beekeeping clothing, you will have the opportunity to observe a bee colony and learn more about honey.

🕒 09:30 - 11:00 | 📍 Meeting point: 9.30 am. at the beekeeping Berger Edmung, Antholz Mittertal |
📌 within 5 pm. of the previous day online or in the tourist offices | Fee: with Guest Pass Antholzertal & Olang € 10.-, otherwise € 20.- per person | € Chargeable | 📞 +39 0474 496269



Guided E-Bike Tour to the Antholzer See

By e-bike through the Antholz Valley. Difference in altitude: 650 m, difficulty: easy/medium. Riding time: 1.5 hours approx. (there)

🕒 09:30 - 14:30 | 📍 Tourist Info Olang & Tourist Info Niederrasen, Lake Antholz |
📌 within 5 pm. of the previous day online or in the tourist offices | Fee: with Guest Pass Olang & Antholz € 10.-, otherwise € 20.- per person | € Chargeable | 📞 +39 0474 496277



Bees: a queen and her people | stroll to the beehive

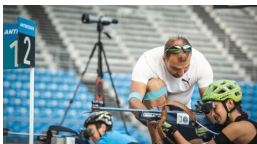
Equipped with protective beekeeping clothing, you will have the opportunity to observe a bee colony and learn more about honey.

🕒 09:30 - 11:00 | 📍 Meeting point: 5 p.m. at the beekeeping Berger Edmung, Antholz Mittertal |
📌 within 5 pm. of the previous day online or in the tourist offices | Fee: with Guest Pass Antholzertal & Olang € 10.-, otherwise € 20.- per person | € Chargeable | 📞 +39 0474 496269



Speck bread hike

🕒 10:00 - 12:00 | 📍 Mid station Olang 1+2, Olang | 📞 +39 0474 496 277



On the roots of the Biathlon champions (In German and Italian Language)

STADIUM TOUR

Past, Present, Future: The stadium in change

🕒 10:30 - 12:30 | 📍 Administrative building, Antholz Obertal |
📌 within 5 p.m. of the previous day at the Biathlon Worldcup committee, phone +39 0474 492390 or online: <https://reservation.biathlon-antholz.it/> (limited number of participants!) | Fee: € 18 per person | € Chargeable | 📞 +39 0474 492390



Kron Arc Adventure - archery for the family

Introductions at 1.00 p.m., 2.00 p.m. and 3.00 p.m. Plan approx. 3 hours for the archery.

🕒 13:00 - 14:00 | 📍 Rodelbahnweg 3, Info Stand Panorama - Valdaora di Sopra/Oberolang |
📌 within 12 am. of the event day in the tourist offices | Exclusive with Guest Pass Olang & Antholz Valley | Fee: adults € 15,00; children € 10,00 | € Chargeable | 📞 +39 0474 496 277



"Nature - Wonder" - herbal walk

🕒 14:00 - 17:00 | 📍 Meeting point: at 2 p.m. at the Niederrasen Tourist Info, Niederrasen |
📌 within 10 a.m. online or in the tourist offices | Fee: with Guest Pass Antholzertal & Olang € 8.-, otherwise € 20.- per person | € Chargeable | 📞 +390474496269



KIDS-HIGHLIGHT: Climb Adventure & Zipline

🕒 16:15 - 18:00 | 📍 Climbing area, Antholz Niedertal |
📌 within 5 pm. of the previous day online or in the tourist offices | Fee: with Guest Pass Olang & Antholz € 20.-, otherwise € 40.- per person | € Chargeable | 📞 +39 0474 496277

WEDNESDAY - 31.07.2024



Sunrise hike in Valdaora

🕒 04:20 - 08:30 | 📍 Valdaora di Mezzo | 📌 within 5 pm. of the previous day online or in the tourist offices | Fee: with Guest Pass Olang & Antholz € 10.-, otherwise € 20.- per person | € Chargeable | 📞 +39 0474 496277



Kids climbing and Zipline for kids

Enjoy a great day at the climbing wall in Antholz Niedertal / Anterselva di Sotto.

🕒 09:30 - 13:30 | 📍 Meeting point: 9.30 am. at the Bar Fischerteich, near the fish pond, Antholz Niedertal |
📌 within 5 pm. of the previous day online or in the tourist offices | Fee: with Guest Pass Antholzertal & Olang € 20.-, otherwise € 40.- per child | € Chargeable | 📞 +39 0474 496269



Guided E-Bike Tour to the Olang alpine pastures

We explore the Olang mountain pastures: Angerer Alm and Lanzwiesen Alm. Difference in altitude: approx. 850 m; difficulty: medium (from 10 years)

🕒 09:30 - 14:30 | 📍 Tourist Info Olang & Tourist Info Niederrasen, Valdaora di Mezzo / Mitterolang |
📌 within 5 pm. of the previous day online or in the tourist offices | Fee: with Guest Pass Olang & Antholz € 10.-, otherwise € 20.- per person | € Chargeable | 📞 +39 0474 496277



Family hike on the Kronplatz

🕒 09:45 - 13:00 | 📍 Kronplatz, Olang | 📌 within 5 pm. of the previous day online or in the tourist offices | Fee: with Guest Pass Olang & Antholz € 5.-, otherwise € 15.- per person | € Chargeable | 📞 +39 0474 496277



Kron Arc Adventure - archery for the family

Introductions at 1.00 p.m., 2.00 p.m. and 3.00 p.m. Plan approx. 3 hours for the archery.

🕒 13:00 - 14:00 | 📍 Rodelbahnweg 3, Info Stand Panorama - Valdaora di Sopra/Oberolang |
📌 within 12 am. of the event day in the tourist offices | Exclusive with Guest Pass Olang & Antholz Valley | Fee: adults € 15,00; children € 10,00 | € Chargeable | 📞 +39 0474 496 277



Climbing for teenagers and adults

Mountain guide Martin helps you to try yourself on the climbing rock!

🕒 13:30 - 15:00 | 📍 Near the fish pond, Antholz Niedertal |
📌 within 5 pm. of the previous day online or in the tourist offices | Fee: with Guest Pass Antholzertal & Olang € 20.-, otherwise € 40.- per child | € Chargeable | 📞 +39 0474 496269



Season hike – exploring the use of herbs

🕒 14:00 - 17:00 | 📍 Florianiplatz 19, Valdaora di Mezzo / Mitterolang |
📌 within 5 pm. of the previous day online or in the tourist offices | Fee: with Guest Pass Olang & Antholz € 5.-, otherwise € 15.- per person | € Chargeable | 📞 +39 0474 496277



Bike Cross for kids (6-12 years)

🕒 15:00 - 17:00 | 📍 Kids Area Panorama - Via dello slittino, Valdaora di Sopra / Oberolang |
📌 within 5 pm. of the previous day online or in the tourist offices | Fee: with Guest Pass Olang & Antholz € 10.-, otherwise € 25.- per person | € Chargeable | 📞 +39 0474 496277



Segway: Introduction and adventure tour

With the trendy Segway we discover the surroundings, and all of this completely ecofriendly.

🕒 15:30 - 16:30 | 📍 Meeting point: 4.30 pm. at the Niederrasen Tourist Info, Niederrasen |
📌 within 11 a.m. online or in the tourist offices | Fee: with Guest Pass Antholzertal & Olang € 20.-, otherwise € 25.- per person | € Chargeable | 📞 +39 0474 496269

Wine tasting at the Steiner Butchery | Meran Winery

🕒 16:00 | 📍 Steiner Butchery, Niederrasen | 📏 within 10 a.m. at the Tourist Info Antholzertal phone +39 0474 496269 or Steiner Butchery phone +39 0474 496849 | € Chargeable | 📞 +39 0474 496849

THURSDAY - 01.08.2024



Summit sunrise tour and alpine breakfast

Guided hike to the Hinterbergkofel (2,725 m) with alpine breakfast at the Außerweger cabin. Walking time: approx. 5 hours (there and back) Difficulty: medium

🕒 02:30 - 12:00 | 📍 Meeting point: sports area Antholz Mittertal, Hinterbergkofel peak | 📏 Tourist Info Antholzertal within 5 p.m. of the previous day | € Chargeable | 📞 +39 0474 496269



HIGHLIGHT: Via Ferrata Tour in the Dolomites

🕒 08:00 - 15:00 | 📍 Florianiplatz 19, Olang/Valdaora |

📏 within 5 pm. of the previous day online or in the tourist offices | Fee: with Guest Pass Olang & Antholz € 30.-, otherwise € 60.- per person | € Chargeable | 📞 +39 0474 496277



Summit hike with Gilbert (Antholz alpine pasture tour)

Tour: parking sports area/Antholz Mittertal (1.259) > Klammbach waterfall (1.508) > Berger Alm hut (1.600) > high walk Antholz > Kumpfl Alm hut (1.653) - sports area

🕒 08:30 - 16:00 | 📍 Meeting point: 8.30 am - Tourist Info Niederrasen, Pustertal |

📏 within 5 pm. of the previous day online or in the tourist offices | Fee: with Guest Pass Antholzertal & Olang € 10.-, otherwise € 15.- per person | € Chargeable | 📞 +39 0474 496269



Yoga at the fish pond: Muscle awakening

The yoga experience at the fish pond in Antholz Niedertal is an oasis of calm that allows you to find your balance and peace in the breathtaking mountain scenery.

🕒 09:00 - 10:00 | 📍 Meeting point: at 9.00 a.m. at the fish ponds foot bridge in Antholz Niedertal, Antholz Niedertal |

📏 within 5 pm. of the previous day online or in the tourist offices | Fee: with Guest Pass Antholzertal & Olang € 5.-, otherwise € 15.- per person | € Chargeable | 📞 +39 0474 496269

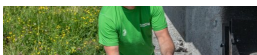


Guided E-Bike Tour to the Hochraut hut

Trail: Mitterolang - Niederrasen - Goste - Mudler Mountain Inn - Hochraut cabin. Difference in altitude: 640 m; Difficulty: middel (from 10 years)

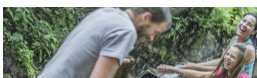
🕒 09:30 - 14:30 | 📍 Tourist Info Olang & Tourist Info Niederrasen, Hochraut cabin |

📏 within 5 pm. of the previous day online or in the tourist offices | Fee: with Guest Pass Olang & Antholz € 10.-, otherwise € 20.- per person | € Chargeable | 📞 +39 0474 496277



Butter bread hike

🕒 10:00 - 12:00 | 📍 Mid station Olang 1+2, Olang | 📞 +39 0474 496 277



Wonderful forest: family hike

🕒 10:00 - 12:00 | 📍 Meeting point: at 10 a.m. at the Niederrasen Tourist Info, Niederrasen |

📏 within 5 p.m. of the previous day online or in the tourist offices | Fee: with Guest Pass Antholzertal & Olang € 8.-, otherwise € 20.- per person | € Chargeable | 📞 +390474496269



Biathlon Stadium tour (In German language)

STADIUM TOUR

Past, Present, Future: The stadium in change

🕒 10:30 - 12:30 | 📍 Meeting point: 10.30 am. at the administrative building, Südtirol Arena Alto Adige, Antholz Obertal |

📏 within 5 p.m. of the previous day at the Biathlon Worldcup committee, phone +39 0474 492390 or online: <https://reservation.biathlon-antholz.it/> (limited number of participants!) | Fee: € 18 per | € Chargeable | 📞 +39 0474 492390



Bread baking course for the family

🕒 11:00 - 15:00 | 📍 Schlosserhof, Valdaora di Sopra / Oberolang |

📏 within 5 pm. of the previous day online or in the tourist offices | Fee: with Guest Pass Olang & Antholz € 5.-, otherwise € 15.- per person | € Chargeable | 📞 +39 0474 496277



Bike Cross for kids (10-14 years)

🕒 15:00 - 17:00 | 📍 Kids Area Panorama, Oberolang |

📏 within 5 pm. of the previous day online or in the tourist offices | Fee: with Guest Pass Olang & Antholz € 10.-, otherwise € 25.- per person | € Chargeable | 📞 +39 0474 496277



FARMAT Summer Lounge - SUNDOWNER MUSIC SESSIONS

Live music from 6.00 - 9.00 pm

🕒 18:00 - 21:00 | 📍 Vierbrunnenstraße 21, Antholz Mittertal | € Chargeable | 📞 +39 346 494529



Sport shooting

🕒 19:00 - 22:00 | 📍 Arts centre Antholz Mittertal / Anterselva di Mezzo, Antholz Mittertal / Anterselva di Mezzo | 📌 Registration is necessary! Passler Markus tel. +39 347 3131069 |

📞 +39 347 3131069



concert of the music band Antholz Niedertal

🕒 20:45 - 22:00 | 📍 Antholz Niedertal band stand, Antholz Niedertal | 📞 +39 0474 496269

FRIDAY - 02.08.2024



Guided E-Bike Tour in the Dolomites

Tour: Niederrasen - Mitterolang - Lake Toblach - Lake Dürrensee - Plätzwiese - Prags - Olang/Rasen. Diff. altitude: 1000 m; Difficulty: demanding (from 10 years)

🕒 09:00 - 14:30 | 📍 Tourist Info Olang & Tourist Info Niederrasen, |

📏 within 5 pm. of the previous day online or in the tourist offices | Fee: with Guest Pass Olang & Antholz € 10.-, otherwise € 20.- per person | € Chargeable | 📞 +39 0474 496277



Adventure Camp for kids (from 6 – 12 years)

🕒 10:00 - 13:00 | 📍 Kids Area Panorama, Oberolang | 📏 within 5 pm. of the previous day online or in the tourist offices |

Exclusive with Guest Pass Olang & Antholzer Valley | € Chargeable | 📞 +39 0474 496277



Traces of time: a historical discovery tour with a visit to the bunker

Leisurely walk to historical locations in Niederrasen.

🕒 12:00 - 14:30 | 📍 Meeting point: at noon at the Tourist Info, Niederrasen |

📏 within 5 p.m. online or in the tourist offices | Fee: with Guest Pass Antholzertal & Olang € 5.-, otherwise € 10.- per person | € Chargeable | 📞 +39 0474 496269



Explore the mushrooms world - half day stroll

Mushroom tour with mycologist Claudio. Participation also possible without picking mushrooms yourself.

🕒 14:00 - 17:30 | 📍 Meeting point: at 2 p.m. at the Tourist Info Anterselva di Mezzo, Antholz Obertal |

📏 within 5 p.m. of the previous day online or in the tourist offices | Fee: with Guest Pass Antholzertal & Olang € 5.-, otherwise € 15.- per person | € Chargeable | 📞 +39 0474 496269



Bike Cross for kids at the MTB area Antholz Niedertal

Bike fans get their money's worth in the MTB area behind the fish pond in Antholz Niedertal (Bike rental and shuttle service included).

15:00 - 17:00 | MTB Parcours, Antholz Niedertal, Meeting point: 2.45 pm. Tourist Info Niederrassen | within 5 pm. of the previous day online or in the tourist offices | Fee: with Guest Pass Antholzertal & Olang € 10.-, otherwise € 25.- per person | Chargeable | +39 0474 496269



Concert of the music band of Niederrassen

20:45 - 22:00 | festival ground Niederrassen, Niederrassen

SATURDAY - 03.08.2024



Guided E-Bike Tour to the Pragser Wildsee

Easy e-bike tour to Pragser Wildsee lake (from 10 years). Riding time: 1.5 h (there). Difference in altitude: 400 m.

09:00 - 13:30 | Tourist Info Olang & Tourist Info Niederrassen, | within 5 pm. of the previous day online or in the tourist offices | Fee: with Guest Pass Olang & Antholz € 10.-, otherwise € 20.- per person | Chargeable | +39 0474 496277



Breakfast at the Hofstatt hut

On Saturdays from 9 to 11 o'clock Patrizia prepares you for an adventurous day.

09:00 - 11:00 | Hofstatt cabin, Antholz Mittertal | Reservation required: T. +39 340 0596718



Information stand Rieserferner-Ahrn Nature Park

14:00 - 16:00 | Lake Antholz



Firemen's festival in Antholz Mittertal

18:00 - 00:00 | Fairground Antholz Mittertal, Antholz Mittertal | +39 0474 496269



Musical festival from the Niederrassen Village Band

18:00 - 01:00 | Pavillon - Freizeitpark, Niederrassen

SUNDAY - 04.08.2024



Musical festival from the Niederrassen Village Band

10:00 - 00:00 | Pavillon - Freizeitpark, Niederrassen



Firemen's festival in Antholz Mittertal

11:00 - 00:00 | Fairground Antholz Mittertal, Antholz Mittertal | +39 0474 496269




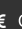

INFORMATION

RESTAURANT AND BAR IN ANTHOLZ VALLEY

- > **HOTEL BRUNNERHOF** | Niederrasen
T. +39 0474 496244 | closed on Tuesdays | only open at lunchtime
- > **HOTEL ALPENHOF** | Niederrasen
T. +39 0474 496451 | no day of rest
- > **PIZZERIA WILLI** | Niederrasen
T. +39 0474 496529 | closed on Wednesdays
- > **GASTHAUS ANSITZ GOLLER** | Niederrasen
T. +39 0474 498431 | closed on Mondays | only open in the evening
- > **ANSITZ HEUFLER** | Oberrasen
T. +39 0474 790200 | closed on Tuesdays
MO - FR: 5 p.m. - 9 p.m.
SA + SU: 10 a.m. - 12 a.m. & 5 p.m. - 9 p.m.
- > **HOFSCHÄNKE DORFMÜLLER** | Antholz Niedertal
T. +39 0474 492165 | no day of rest
open only for dinner with reservation!
- > **HOTEL MESSNERWIRT** | Antholz Niedertal
T. +39 0474 492165 | no day of rest
Restaurant open for lunch and dinner
- > **BERGHOTEL JOHANNESHOF** | Antholz Mittertal
T. +39 0474 868333 | no day of rest
Restaurant open only for dinner (with reservation)
- > **SANTESHOTEL WEGERHOF** | Antholz Mittertal
T. +39 0474 492130 | no day of rest
- > **RESTAURANT PIZZERIA ANGER** | Antholz Mittertal
T. +39 0474 492333 | closed on Tuesdays
- > **HOFSCHÄNKE EGGERHÖFE** | Antholz Mittertal
T. +39 0474 493030 | closed on Mondays
Restaurant open for lunch and dinner (only with reservation)
- > **RESTAURANT, BAR CAMPING ANTHOLZ** | Antholz Mittertal
T. 0474 492444 | closed on Thursday
Restaurant open only for dinner
- > **SPORTHOTEL WILDGALL** | Antholz Obertal
T. +39 0474 492136 | no day of rest
- > **PLATZL AM SEE** | Antholzer See
T. +39 0474 492252 | no day of rest | closed in the evening
- > **ENZIANHÜTTE** | Antholzer See
T. +39 340 059 96718 | closed on Tuesdays | closed in the evening
- > **ALPENGATSHAUS OBERSEE** | Staller Sattel
T. +43 680 1182971 | closed on Mondays | closed in the evening
- > **SEEHAUS MOUNTAIN LAKE RESORT** | Antholzer See
T. +39 349 0027583 | closed on Monday | dinner only with reservation
- > **MUDLER BERGGASTHAUS** | Niederrasen/Taisten
T. +39 0474 950036 | closed on Tuesdays

CAFÈ, BAR & SNACKS

- > **CAFÈ BAR PROSECCO** | Niederrasen
T. +39 0474 496211 | no day of rest
- > **BAR HOTEL BRUNNERHOF** | Niederrasen
T. +39 0474 496244 | closed on Tuesdays
- > **BAR HOTEL BRÖTZ** | Niederrasen
T. +39 0474 496138 | no day of rest
- > **BAR GASTHOF LECHNER** | Oberrasen
T. +39 0474 496134 | no day of rest
- > **BAR GASTHOF TROGER** | Oberrasen
T. +39 0474 496215 | no day of rest
- > **BAR HOTEL BAD SALOMONSBRUNN** | Antholz Niedertal
T. +39 0474 492149 | no day of rest
- > **BAR FISCHERTEICH** | Antholz Niedertal
T. +39 342 5354354 | closed on Mondays
- > **CAFÈ ST. WALBURG** | Antholz Niedertal
T. +39 0474 492180 | closed on Tuesdays
- > **BAR HOTEL ANTHOLZERHOF** | Antholz Niedertal
T. +39 0474 492149 | no day of rest
- > **BAR SANTESHOTEL WEGERHOF** | Antholz Mittertal
T. +39 0474 492130 | no day of rest
- > **BAR GASTHOF BRUGGERWIRT** | Antholz Mittertal
T. +39 0474 492120 | closed on Tuesdays
- > **FALKENSTEINER HOTEL ANTHOLZ** | Antholz Obertal
T. +39 0474 494520 | no day of rest

 Time |  Venue |  Application required |  Chargeable |  Contact

Tourismusverein Antholztal

Via Rasun di Sotto 35 F, 39030 Valle Anterselva
Tel. +39 0474 496269 | <http://www.antholztal.com>

Valle Anterselva

For more Information:
antholztal.guest.net

